

Subject:	CLASSIFICATION OF STRUCTURED SYSTEMS
Proposal:	POWDERS Working Group
QUALICOAT resolution:	TC Meeting held on 26 June 2008 <i>(ratified on 19 November 2008)</i>
Date of application:	January 2009
Amendments to the Specifications:	Revised Appendix A3 - Compulsory declaration of changes in formulation for powders approved by QUALICOAT
See following page	

A3 – Compulsory declaration of changes in formulation for powders approved by QUALICOAT

[...]

5. APPEARANCE OF THE FINAL COATING

Like all other coatings, powders – after curing – can give the final coating different appearances, for example:

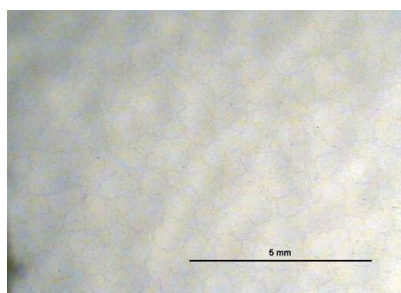
- a smooth appearance
- a structured appearance

A structured appearance cannot be treated like a smooth appearance. Even if the change in formulation is based on special additives, a powder imparting an uneven appearance, which does not involve colour gloss or metallic effect, needs a special QUALICOAT approval in a different category from the approvals granted for smooth powder.

Definition criteria for structured surfaces

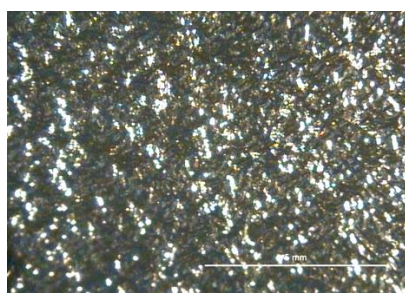
These finishes can be split into the following three families. An approval is necessary for each family.

a) **Leathered (or orange peel)**, where the production technology generally takes advantage of the phenomenon of incompatibility between some components in the coating product formulation. The surface has an orange peel appearance. The effect, called antiqued metallised, falls within the “leathered” category with the addition of the metallic effect pigments. Both this last finish and “hammered” finish must be carefully monitored and approved, in particular for external use.



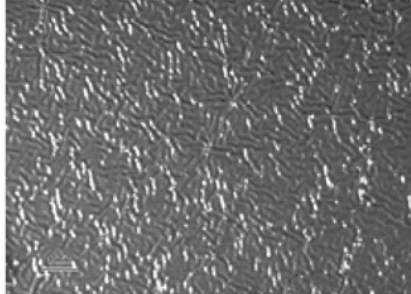
Leathered appearance

b) **Textured (or sandpaper)**, where the production technology generally makes use of the effect of adding particular substances (e.g. Teflon based waxes, fillers with a high oil content, etc.) to the formulation of coating products. The surface has an appearance resembling sandpaper.



Textured (or sand paper) appearance

c) **Wrinkled**, where the technology generally derives from the reactivity between hydroxylated resins and melamine resins.



Wrinkled appearance